



Instruction Manual

**Manual de
instrucciones**

Guide d'utilisation



ET2025™



GENERAL SAFETY RULES

WARNING! Read all instructions. Failure to follow all instructions listed below may result in electric shock, fire, and / or serious injury. When using electric tools, basic safety precautions should always be followed to reduce the risk of fire, electrical shock and personal injury. Read the following rules for safe operation before use.

SAVE THESE INSTRUCTIONS

- 1. WORK AREA:** Keep your work area clean and well lit. Cluttered benches and dark areas invite accidents. **Do not operate power tools in explosive atmospheres, such as in the presence of flammable liquids, gases, or dust.** Power Tools create sparks which may ignite the dust or fumes. **Keep bystanders, children, and visitors away while operating a power tool.** Distractions can cause you to lose control.
- 2. ELECTRICAL SAFETY:** Double Insulated tools are equipped with a polarized plug (one blade is wider than the other.) This plug will fit in a polarized outlet only one way. If the plug does not fit fully in the outlet, reverse the plug. If it still does not fit, contact a qualified electrician to install a polarized outlet. **Do not change the plug in any way. Double Insulation eliminates the need for the three wire grounded power cord and grounded power supply system. Do not expose power tools to rain or wet conditions.** Water entering a power tool will increase the risk of electrical shock. **Do not abuse the cord. Never use the cord to carry the tools or pull the plug from an outlet. Keep cord away from heat, oil, sharp edges, or moving parts. Replace damaged cords immediately.** Damaged cords increase the risk of electric shock. **When operating a power tool outside, use an outdoor extension cord marked "W-A" or "W".** These cords are rated for outdoor use and reduce the risk of electric shock.
- 3. PERSONAL SAFETY:** Stay alert, watch what you are doing, and use common sense when operating a power tool. **Do not use tool while tired or under the influence of drugs, alcohol or medication.** A moment of inattention while operating power tools may result in serious personal injury. **Dress properly. Do not wear loose clothing or jewelry. Contain long hair. Keep your hair, clothing, and gloves away from moving parts.** Loose clothes, jewelry, or long hair can be caught in moving parts. **Avoid accidental starting. Be sure switch is off before plugging in.** Carrying tools with your finger on the switch or plugging in tools that have the switch on invites accidents. **Remove adjusting keys or switches before turning tool on.** A wrench or key that is left attached to a rotating part of the tool may result in personal injury. **Do not overreach. Keep proper footing and balance at all times.** Proper footing and balance enables better control of the tool in unexpected situations. **Use safety equipment. Always wear eye protection.** Dust mask, non skid safety shoes, hard hat, or hearing protection must be used for appropriate conditions.
- 4. TOOL USE AND CARE:** Use clamps or other practical way to secure and support the workpiece to a stable platform. Holding the work by hand or against your body is unstable and may lead to loss of control. **Do not force tool. Use the correct tool for your application.** The correct tool will do the job better and safer at the rate for which it was designed. **Do not use tool if the switch does not turn it on or off.** Any tool that cannot be controlled with the switch is dangerous and must be repaired. **Disconnect the plug from the power source before making any adjustments, changing accessories, or storing the tool.** Such preventative safety measures reduce the risk of starting the tool accidentally. **Store idle tools out of the reach of children and other untrained persons.** Tools are dangerous in the hands of untrained users.

Maintain tools with care. Keep cutting tools sharp and clean. Properly maintained tools, with sharp cutting edges are less likely to bind and are easier to control. **Check for misalignment or binding of moving parts, breakage of parts, and any other condition that may affect the tools operation. If damaged, have the tools serviced before using.** Many accidents are caused by poorly maintained tools.

Use only accessories that are recommended by the manufacturer for your model. Accessories that may be suitable for one tool, may become hazardous when used on another tool.




5. **SERVICE: Tool service must be performed only by qualified repair personnel.** Service or maintenance performed by unqualified personnel could result in a risk of injury. **When servicing a tool, use only identical replacement parts. Follow instructions in the maintenance section of this manual.** Use of unauthorized parts or failure to follow maintenance instructions may create a risk of electric shock or injury.

SPECIFIC SAFETY RULES

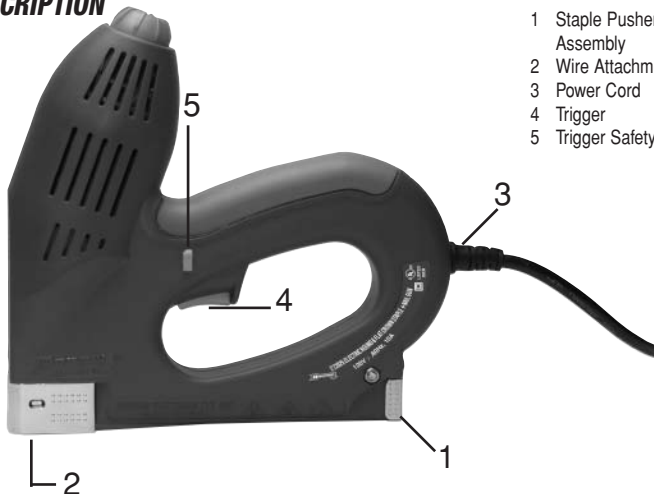
- 1 Hold tool by insulated gripping surfaces when performing an operation where the cutting tool may contact hidden wiring or its own cord.** Contact with a “live” wire will also make exposed metal parts of the tool “live” and shock the operator.
- 2 Know your power tool.** Read operator’s manual carefully. Learn its applications and limitations, as well as the specific potential hazards related to this tool. Following this rule will reduce the risk of electric shock, fire, or serious injury.
- 3 Always wear safety glasses with side shields.** Everyday glasses have only impact resistant lenses. They are NOT safety glasses. Following this rule will reduce the risk of eye injury.
- 4 Protect your lungs.** Wear a face or dust mask if the operation is dusty. Following this rule will reduce the risk of serious personal injury.
- 5 Protect your hearing.** Wear hearing protection during extended periods of operation. Following this rule will reduce the risk of serious personal injury.
- 6 Do not abuse cord.** Never carry tool by cord. Never yank cord to disconnect it from receptacle. Keep cord away from heat, oil & sharp edges.
- 7 Do not attempt to alter the tool.** Your ET2025™ has a tested cycling time. It is designed to perform adequately at this rate. Any unauthorized alteration and/or use of unauthorized replacement parts is misuse which could result in a hazardous condition causing possible serious personal injury. Unauthorized parts and/or tool modification automatically voids warranty.
- 8 Use only original ARROW parts.**

DEFINITION OF SYMBOLS USED ON TOOL

V	Volts
A	Amperes
Hz	Hertz
~	Alternating Current

 Alert
 Wear Eye Protection
 Wear Ear Protection

FUNCTIONAL DESCRIPTION



- 1 Staple Pusher Assembly
- 2 Wire Attachment
- 3 Power Cord
- 4 Trigger
- 5 Trigger Safety Lock

ASSEMBLY

- 1 MAKE SURE YOU HAVE READ ALL SAFETY INSTRUCTIONS.
- 2 This tool comes completely assembled. There is no assembly required.


OPERATION

Never load staples and nails at the same time

Loading your tool with staples.

1. Remove pusher rod from machine (FIG.#1)
2. Insert strip of staples into magazine
3. Replace pusher rod

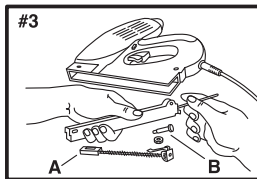
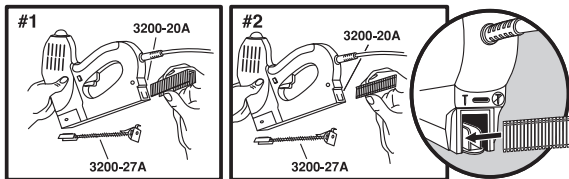
Loading your tool with Brad nails.

1. Remove pusher rod from machine (FIG.#2).
2. Insert strip of nails into left channel of magazine.
(side with: )
3. Replace pusher rod.

Attempting to force brad nails into right side of staple chamber may cause damage to the tool.

Cleaning Staple Chamber.

1. Remove pusher rod "A" (FIG.#3)
2. Remove screw & nut from hole "B"
3. Remove entire magazine from housing.



MAINTENANCE

Your ET2025™ is virtually maintenance free. Keep tool clean and free of dust. Wipe clean with a dry cloth do not use harsh chemicals to clean your ET2025™.

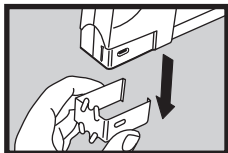
Your ET2025™ contains no user serviceable parts. In the unlikely event that your ET2025™ should need service contact:

Arrow Fastener Co., Inc.

271 Mayhill street, Saddle Brook, N.J. 07663

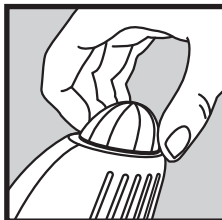
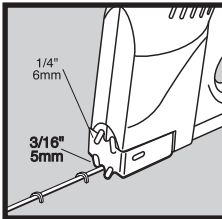
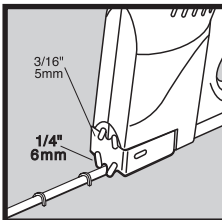
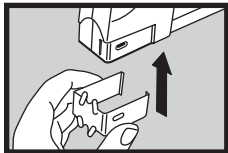
Tel. 201 843-6900

ACCESSORIES



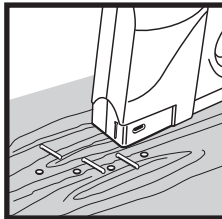
**ROUND
CROWN
STAPLES**

For wire & cable installation, use wire attachment with round crown staples.



**FLAT CROWN
STAPLES
+ BRAD NAILS**

Remove wire attachment, and turn power adjustment knob to drive staples & nails flush into surface.



Arrow accessories and genuine Arrow T50® Staples and Brad nails are available at retail outlets, hardware stores, lumberyards and wherever fine tools are sold.

1 Year Limited Warranty

Arrow Fastener Company warrants to the original consumer purchaser (“you”) that this product will be free from original defects in materials and workmanship for 1 year after you purchase it. If the product does not comply with this warranty, Arrow will, at its option, repair or replace the product with an equivalent product at no charge to you. This warranty is not transferable. For best performance, use genuine Arrow staples & nails. Arrow staples & nails are made to exact tolerances to insure trouble-free stapling & nailing performance. This warranty does not cover defect or damage relating to the use of non Arrow branded staples & nails. This warranty also does not cover damage relating to normal wear and tear, misuse, abuse, neglect, accident, natural disaster, or alteration of the product without Arrow’s consent. TO THE EXTENT PERMITTED BY LAW, ANY IMPLIED WARRANTIES, INCLUDING ANY WARRANTY OF MERCHANTABILITY OR FITNESS FOR A PARTICULAR PURPOSE, ARE LIMITED TO THE SAME DURATION AS THIS EXPRESS WARRANTY. Some states do not allow limitations on how long an implied warranty lasts, so the above limitation may not apply to you. NO OTHER EXPRESS WARRANTY HAS BEEN MADE OR WILL BE MADE BY ARROW WITH RESPECT TO THIS PRODUCT. ARROW SHALL NOT BE RESPONSIBLE FOR SPECIAL, INCIDENTAL OR CONSEQUENTIAL DAMAGES WHETHER ARISING OUT OF BREACH OF WARRANTY, BREACH OF CONTRACT, TORT, OR OTHERWISE. Some states do not allow the exclusion of incidental or consequential damages so the above exclusion and limitation may not apply to you. This warranty gives you specific legal rights, and you also may have other rights which vary from state to state. This guarantee does not effect your statutory rights. In Canada, the above provisions are not intended to operate where prohibited by law and do not preclude the operation of any applicable provincial consumer protection statute which may in certain circumstances extend the express warranty herein. To obtain the benefits of this warranty, you must send the product securely packaged with proof of purchase and postage prepaid to:

Arrow Fastener Co., Inc.

271 Mayhill street, Saddle Brook, N.J. 07663